



EU-China CDM Facilitation Project Workshop on Validation

Methodologies for large scale projects

Beijing

November 13th, 2007

Dipl.-Ing. You Cui
TÜV Rheinland Group

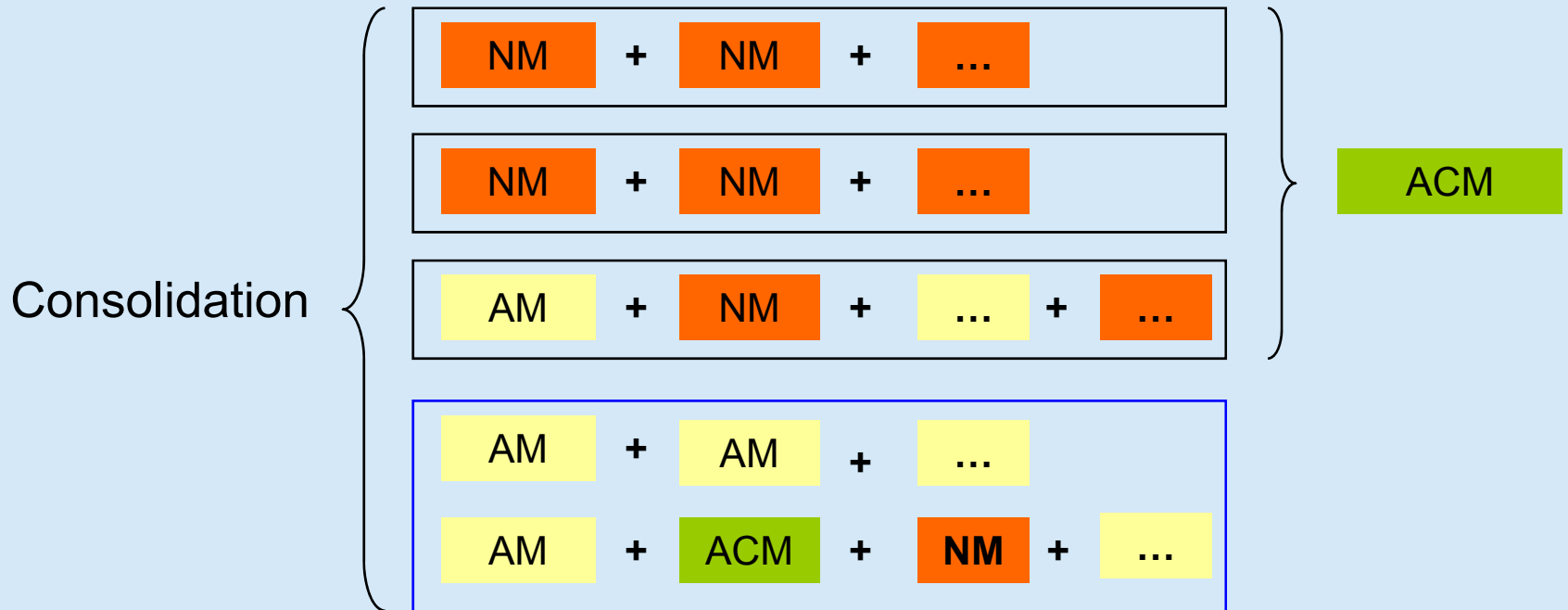


■ Contents

1. Introduction of methodologies
2. Structure of methodologies
3. Development of methodologies including guidelines
 - Procedure for the submission and consideration of queries regarding the application of approved methodologies by Designated Operational Entities to the Meth Panel (Version 4)
 - Procedure for the revision of an approved baseline or monitoring methodology by the Executive Board (Version 08.1)
 - Procedure for the submission and consideration of a proposed new methodology (Version 12)

- Type of methodologies for large scale projects
 - Proposed New Methodologies (NM)
 - Approved methodologies (AM)
 - Approved Consolidated Methodologies (ACM)

■ Consolidation of methodologies



If EB approves an ACM including AM(s) / ACM(s) the ACM replaces the previously AM(s) / ACM(s)

■ ACM

Methodologies	Sources	Sectoral scopes
ACM0001	AM0002, AM0003, AM0010, AM0011	13
ACM0002	NM0001-rev, NM0012-rev, NM0023, NM0024-rev, NM0030-rev, NM0036, NM0043, NM0055 and replaces AM0005	1
ACM0003	NM0040, NM0048-rev	4
ACM0005	NM0045-ver2, NM0047-ver, NM0095, NM0106	4
ACM0006	NM0050-rev, NM0081, NM0098 and replaces AM0004, AM0015	1
ACM0007	NM0070, NM0078-rev	1
ACM0008	NM0066, NM0075, NM0093, NM0094, NM0102	8, 10
ACM0009	NM0131, NM0132 and replaces AM0008	1, 4
ACM0010	NM0006, AM0016	13, 15
ACM0011	NM0200-rev, NM0213	1
ACM0012	NM0155-rev, NM0179, NM0192-rev and replaces ACM0004, AM0032	1, 4
ACM0013	NM0215, NM0217	1

■ Withdrawal of an AM because of consolidation

CDM projects	AM	ACM
Registered	applicable	not applicable
Not registered, but <ul style="list-style-type: none"> • request for registration before the data of revision • request for registration within 8 weeks after AM was replaced by a ACM 	applicable	not applicable
Other not registered CDM projects	not applicable	applicable

■ Aim of consolidating methodologies

1. Make the set of available methodologies more concise and user friendly
2. Avoid possible inconsistencies between methodologies

■ Conditions of consolidation

AM(s) / NM(s) should be consolidated into one single ACM, if:

1. AMs are similar in many of their core components*.
2. the ACM can be drafted on the basis of these AM(s) / NM(s) and if the ACM is applicable to all project activities of at least one of the original AM(s) / NM(s).

* (e.g. applicability, approach, technology, measure, baseline determination, demonstration of additionality, or emission calculation),

- Approved methodologies by scope (10/2007)

Scope	01	02	03	04	05	06	07	08	09	10	11	12	13	14	15	Σ
AM	21	0	4	10	9	0	1	0	2	4	2	0	9	9	0	71
ACM	7	0	0	4	0	0	0	1	0	1	0	0	2	0	1	16
Σ	28	0	4	14	9	0	1	1	2	5	2	0	11	9	1	87

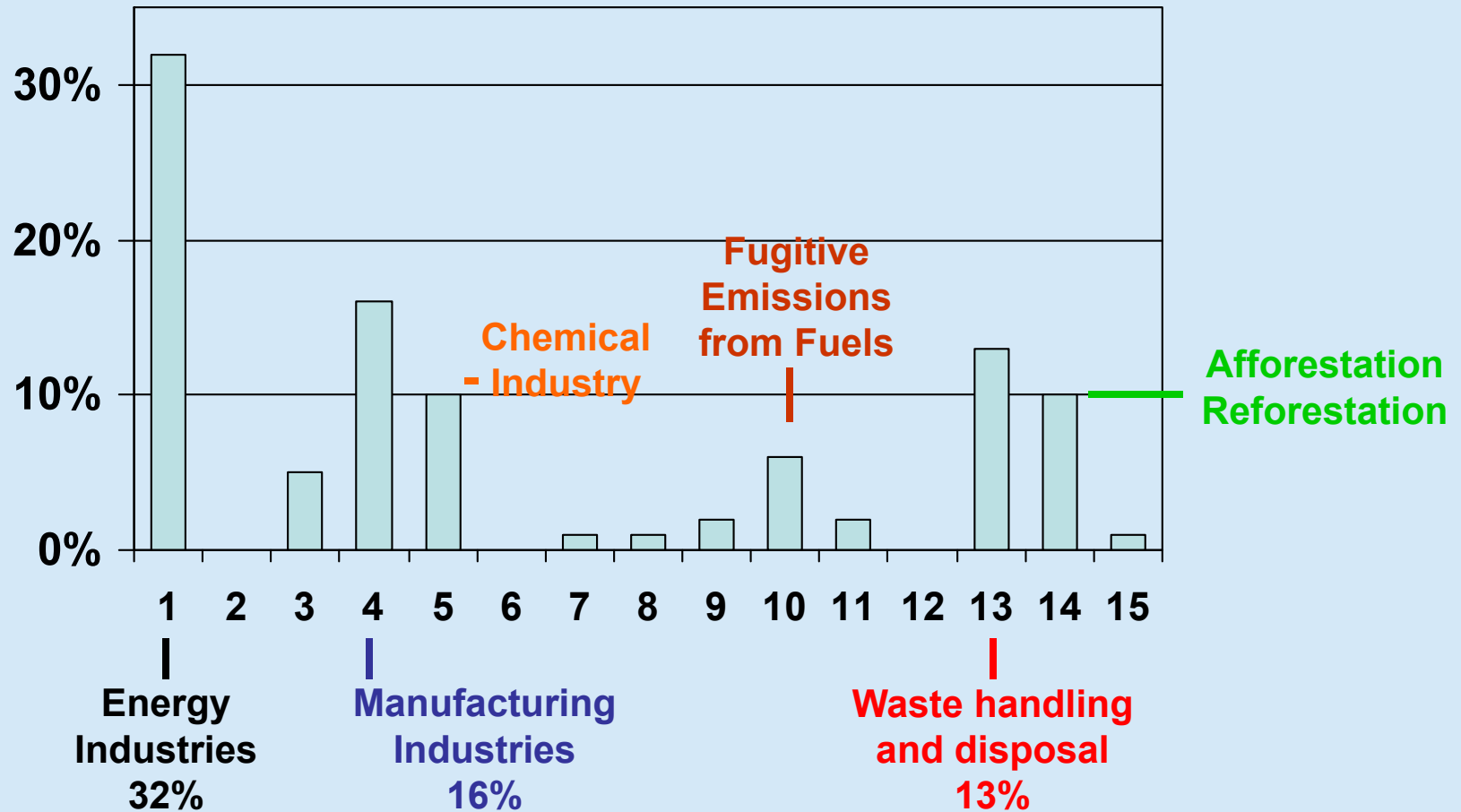
Energy Industries

Manufacturing Ind.
Chemical Industries

Waste Handling
Afforestation & Ref.

87 approved methodologies by scope (10/2007)

■ Sectoral Scope



■ AM most frequently used

Approved LSC Methodologies	Registered LSC projects
AM0001	16
AM0002	1
AM0003	5
AM0007	0
AM0009	3
AM0010	1
AM0011	6
AM0013	3
AM0014	1
AM0017	0
AM0018	7
AM0019	0
AM0020	0
AM0021	3
AM0022	2
AM0023	0
AM0024	3

Approved LSC Methodologies	Registered LSC projects
AM0025	3
AM0026	1
AM0027	1
AM0028	8
AM0029	2
AM0030	0
AM0031	1
AM0033	0
AM0034	4
AM0035	0
AM0036	1
AM0037	0
AM0038	0
AM0039	0
AM0040	0
AM0041	0
AM0042	0

- AM most frequently used

Approved LSC Methodologies	Registered LSC projects
AM0043	0
AM0044	0
AM0045	1
AM0046	0
AM0047	0
AM0048	0
AM0049	0
AM0050	0
AM0051	0
AM0052	0
AM0053	0
AM0054	0
AM0055	0
AM0056	0

Approved LSC Methodologies	Registered LSC projects
AM0057	0
ACM0001	46
ACM0002	138
ACM0003	7
ACM0005	14
ACM0006	32
ACM0007	1
ACM0008	5
ACM0009	2
ACM0010	0
ACM0011	0
ACM0012	0
ACM0013	0
Σ	318

- AM most frequently used

Approved LSC Methodology	Registered LSC projects	Percentage [%]
ACM0002	138	43,4
ACM0001	46	14,5
ACM0006	32	10,1
AM0001	16	5
ACM0005	14	5
Σ	318	100

32 AM/ACM (37 %) don't have any registered project!!!

■ Contents

1. Introduction of methodologies
2. Structure of methodologies
3. Development of methodologies including guidelines
 - Procedure for the submission and consideration of queries regarding the application of approved methodologies by Designated Operational Entities to the Meth Panel (Version 4)
 - Procedure for the revision of an approved baseline or monitoring methodology by the Executive Board (Version 08.1)
 - Procedure for the submission and consideration of a proposed new methodology (Version 12)

■ Structure of methodologies

Baseline methodology

- Sources
- Applicability
- Project activity
- Approach
- Additionality
- Project boundary
- Baseline
- Guidance on selecting alternative weights
- Leakage
- Emission reduction
- Estimation of emissions reductions prior to validation

■ Structure of methodologies

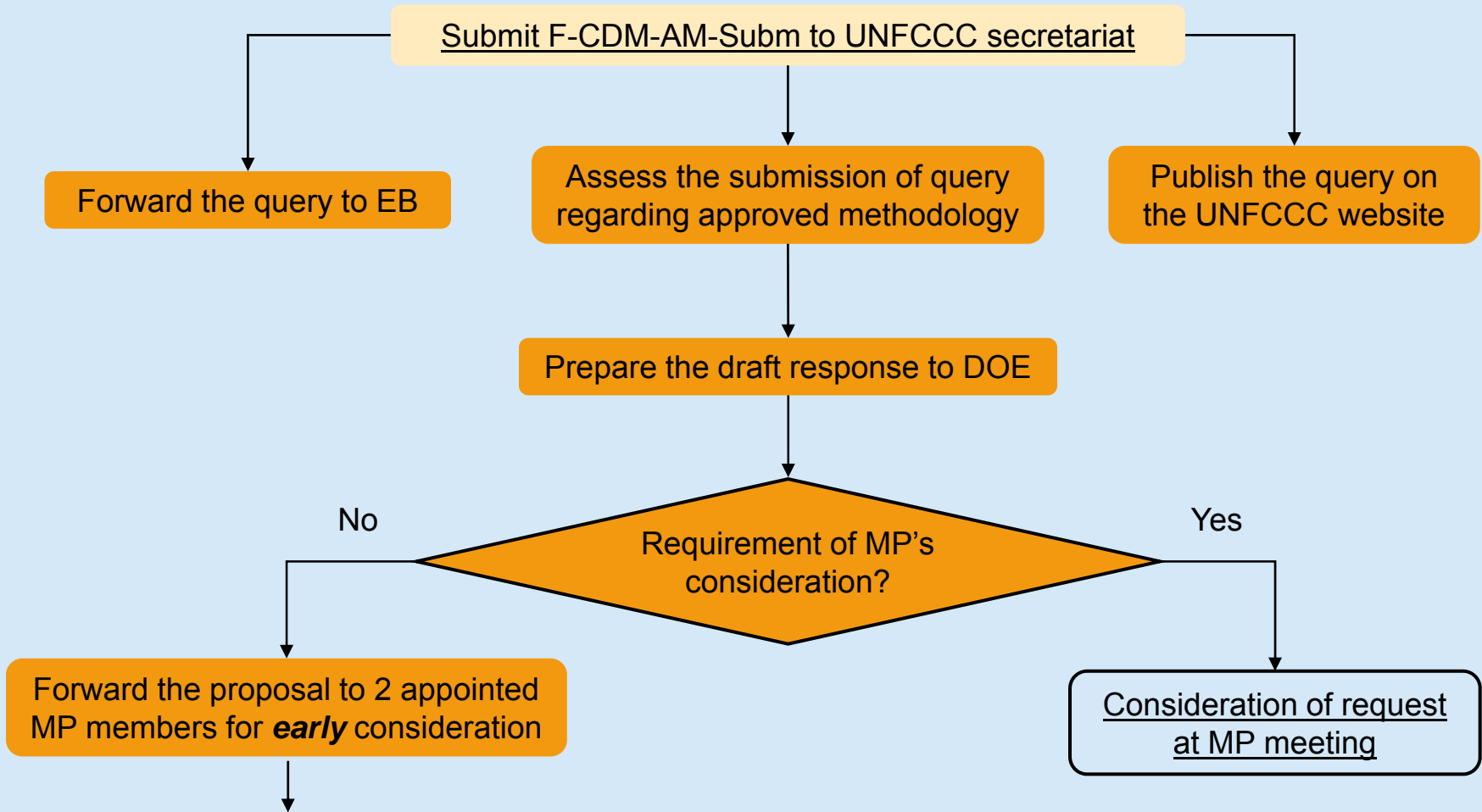
Monitoring methodology

- Sources
- Applicability
- Monitoring methodology
- Project boundary
- Baseline emission parameters
- Quality control and quality assurance procedures
- Baseline data

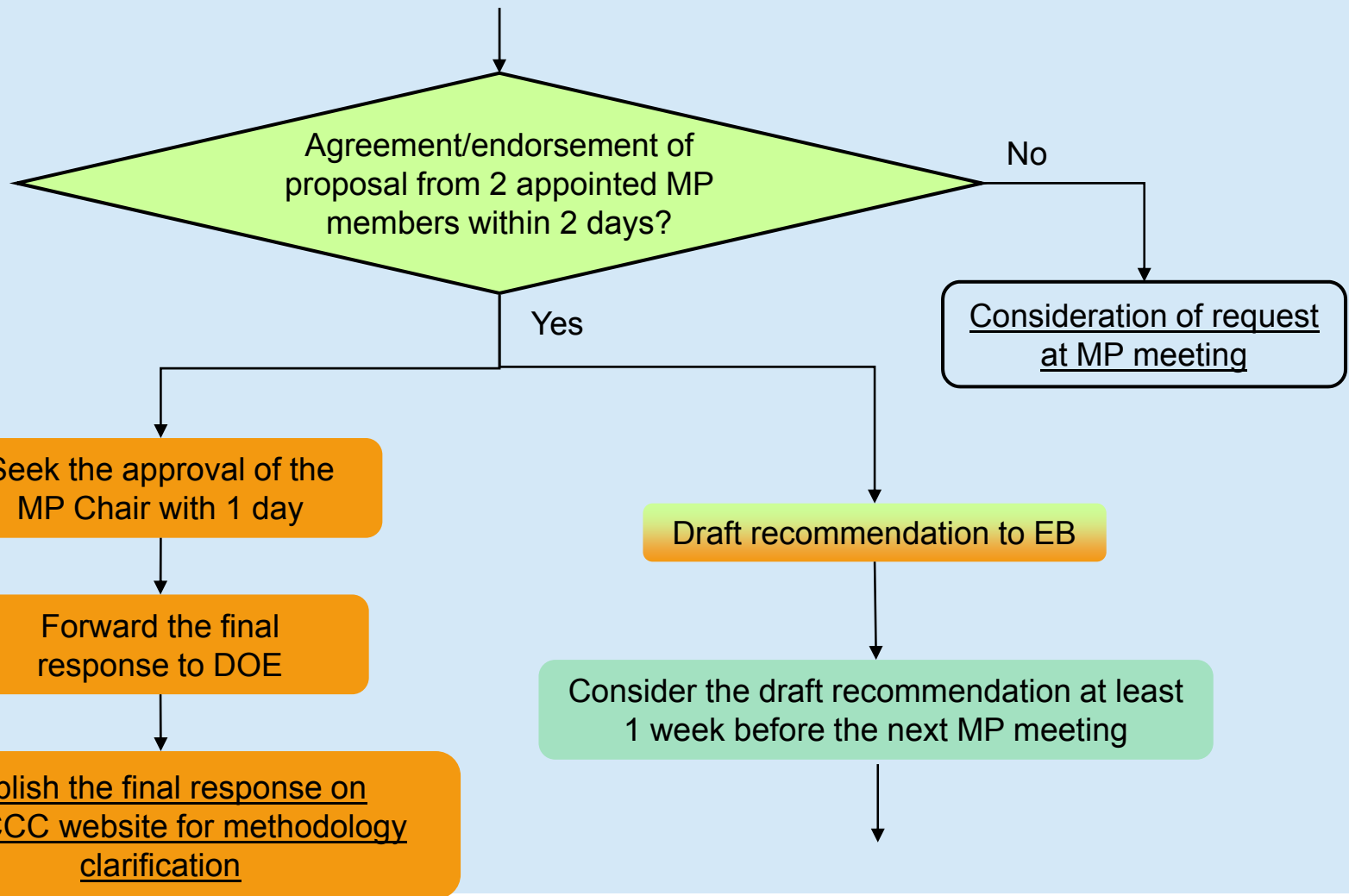
■ Contents

1. Introduction of methodologies
2. Structure of methodologies
3. Development of methodologies including guidelines
 - Procedure for the submission and consideration of queries regarding the application of approved methodologies by Designated Operational Entities to the Meth Panel (Version 4)
 - Procedure for the revision of an approved baseline or monitoring methodology by the Executive Board (Version 08.1)
 - Procedure for the submission and consideration of a proposed new methodology (Version 12)

- Procedure for the submission and consideration of queries regarding the application of approved methodologies by the DOE to the MP

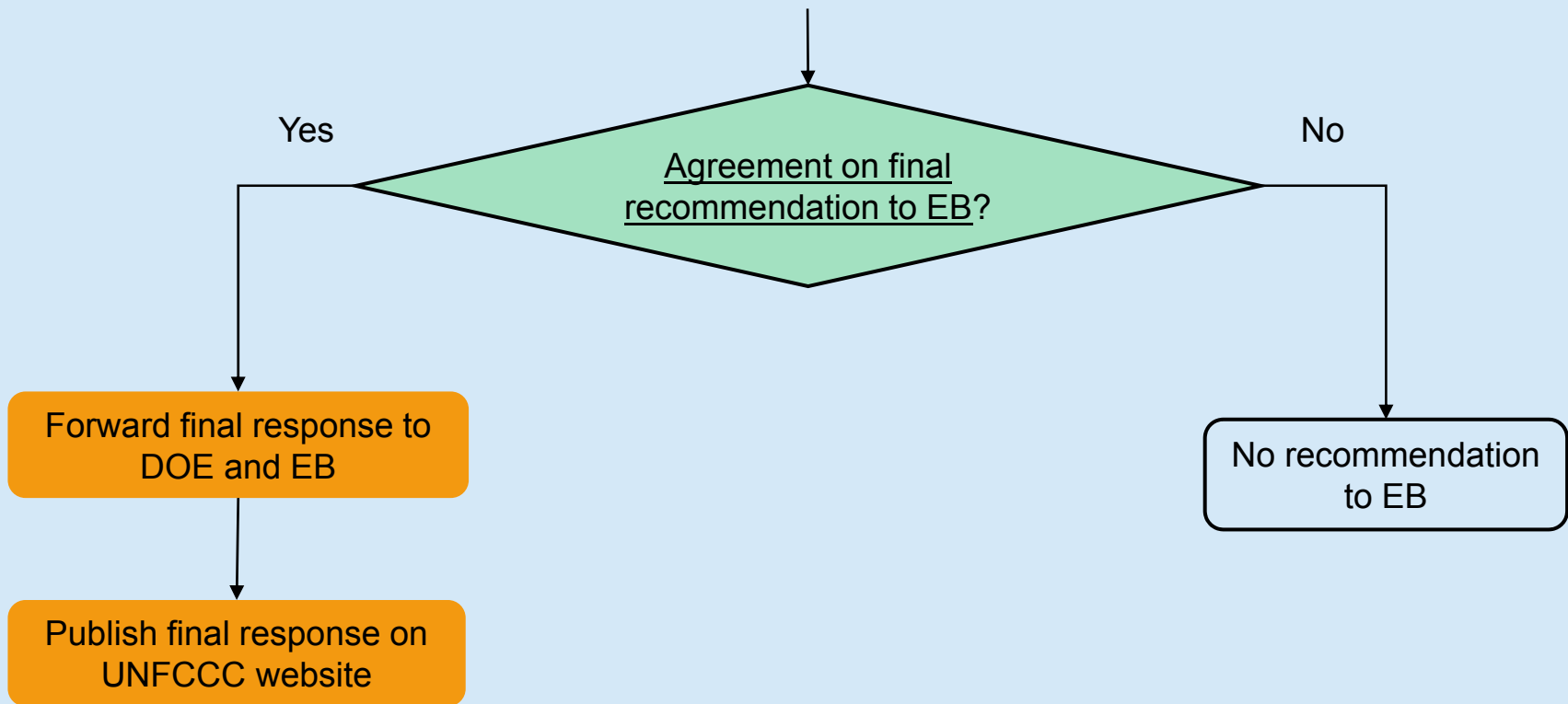


- Procedure for the submission and consideration of queries regarding the application of approved methodologies by the DOE to the MP



- Procedure for the submission and consideration of queries regarding the application of approved methodologies by the DOE to the MP

MP meeting



■ Guidance (1)

The clarifications to AM(s) may be carried out in response to requests by a project participant or relevant stakeholders or may be carried out in response to requests recommended by the Executive Board, Meth Panel or Working Groups in accordance with the latest version of the procedures.

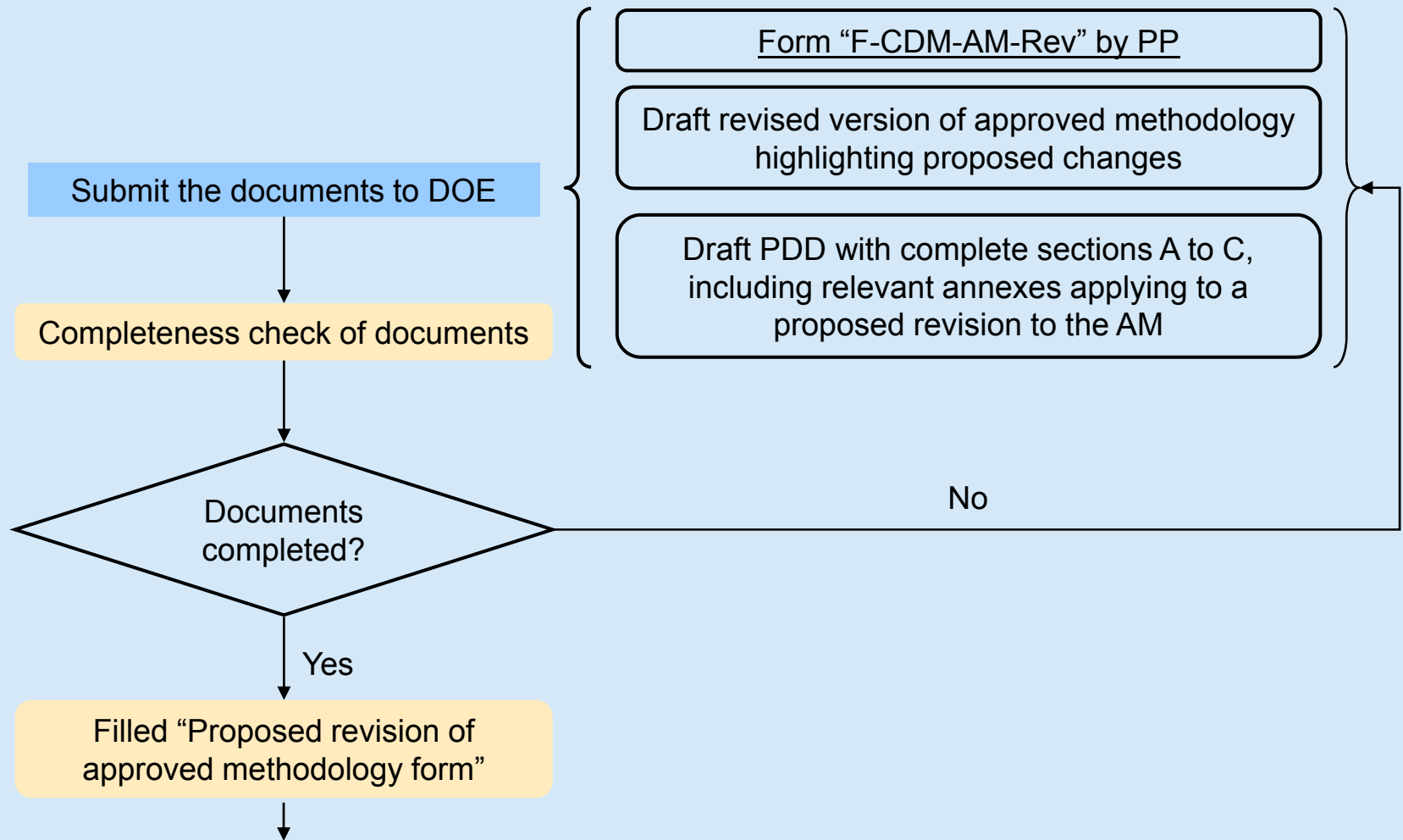
■ Guidance (2)

The procedure for request for clarification is provided to enable the DOEs, and project participants via the DOE, to seek clarification on the applicability of an approved methodology, clarification on various procedures provided in an approved methodology, inter alia for identifying the baseline scenario, demonstrating additionality, estimating baseline emissions, project emissions, leakage, etc. and in clarifying monitoring data and procedures.

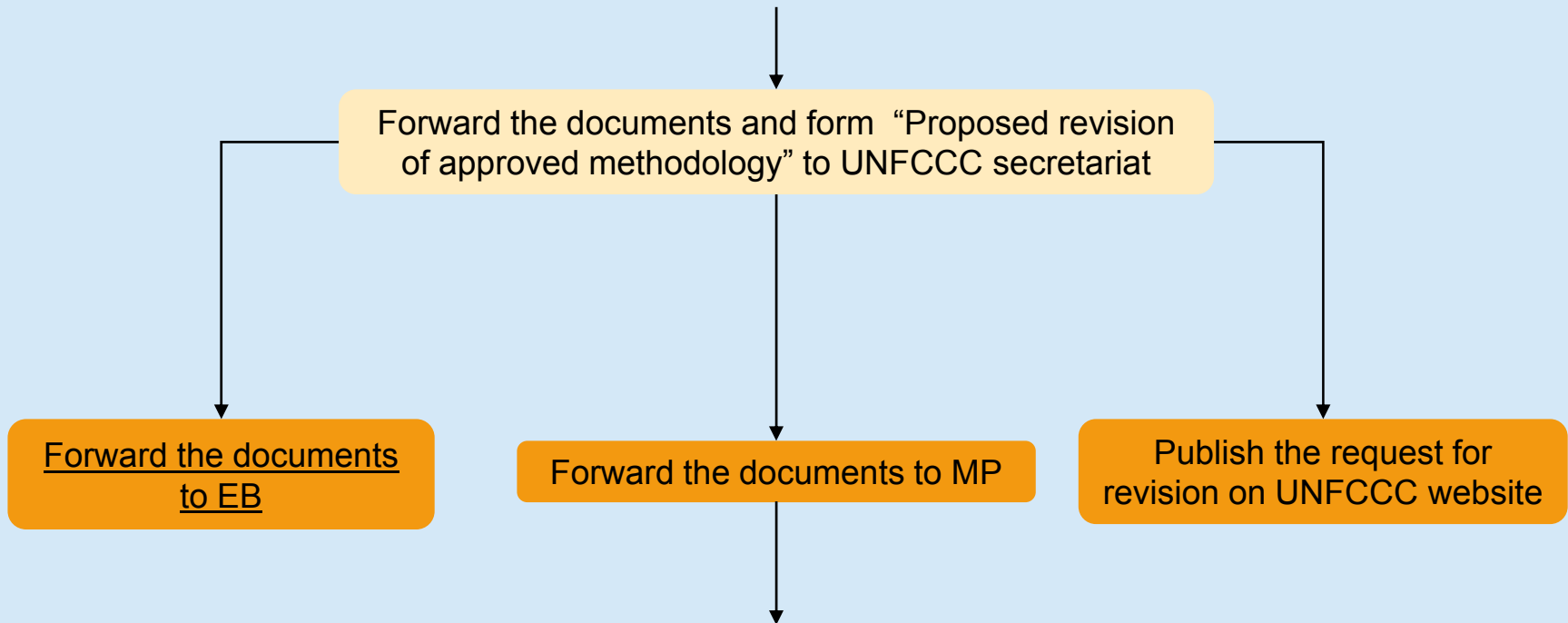
■ Contents

1. Introduction of methodologies
2. Structure of methodologies
3. Development of methodologies including guidelines
 - Procedure for the submission and consideration of queries regarding the application of approved methodologies by Designated Operational Entities to the Meth Panel (Version 4)
 - Procedure for the revision of an approved baseline or monitoring methodology by the Executive Board (Version 08.1)
 - Procedure for the submission and consideration of a proposed new methodology (Version 12)

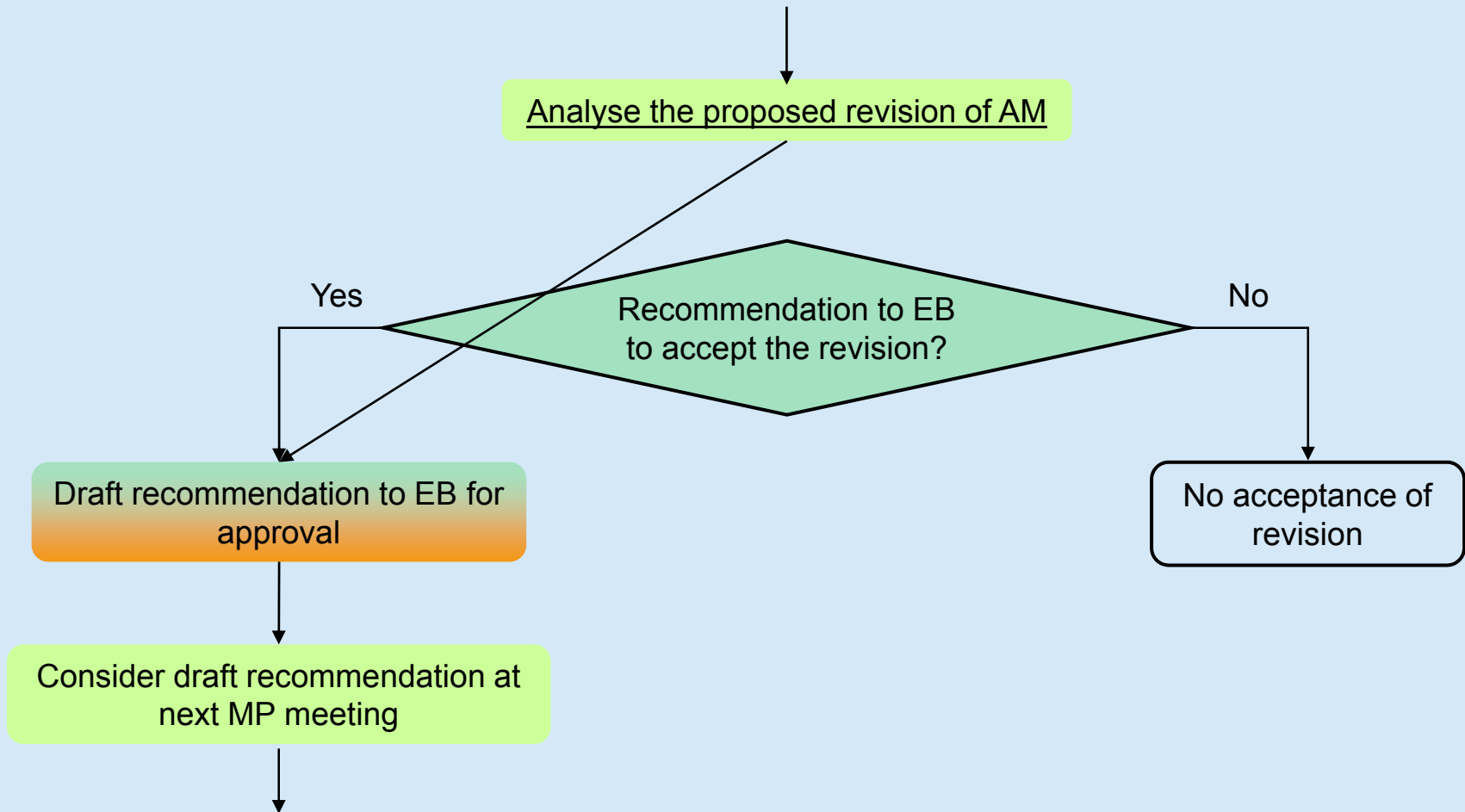
- Procedure for the revision of an approved baseline or monitoring methodology by the EB



- Procedure for the revision of an approved baseline or monitoring methodology by the EB

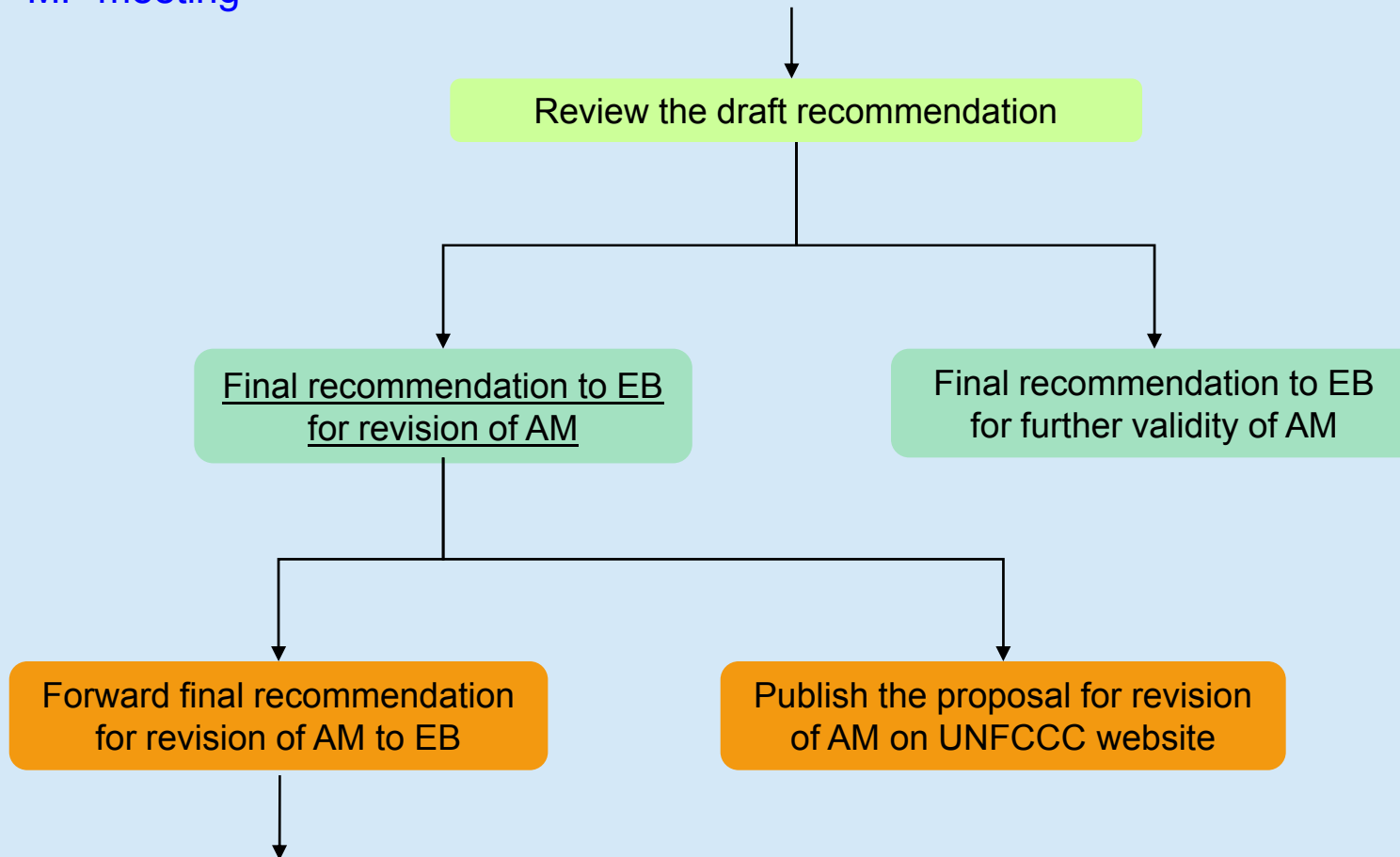


- Procedure for the revision of an approved baseline or monitoring methodology by the EB



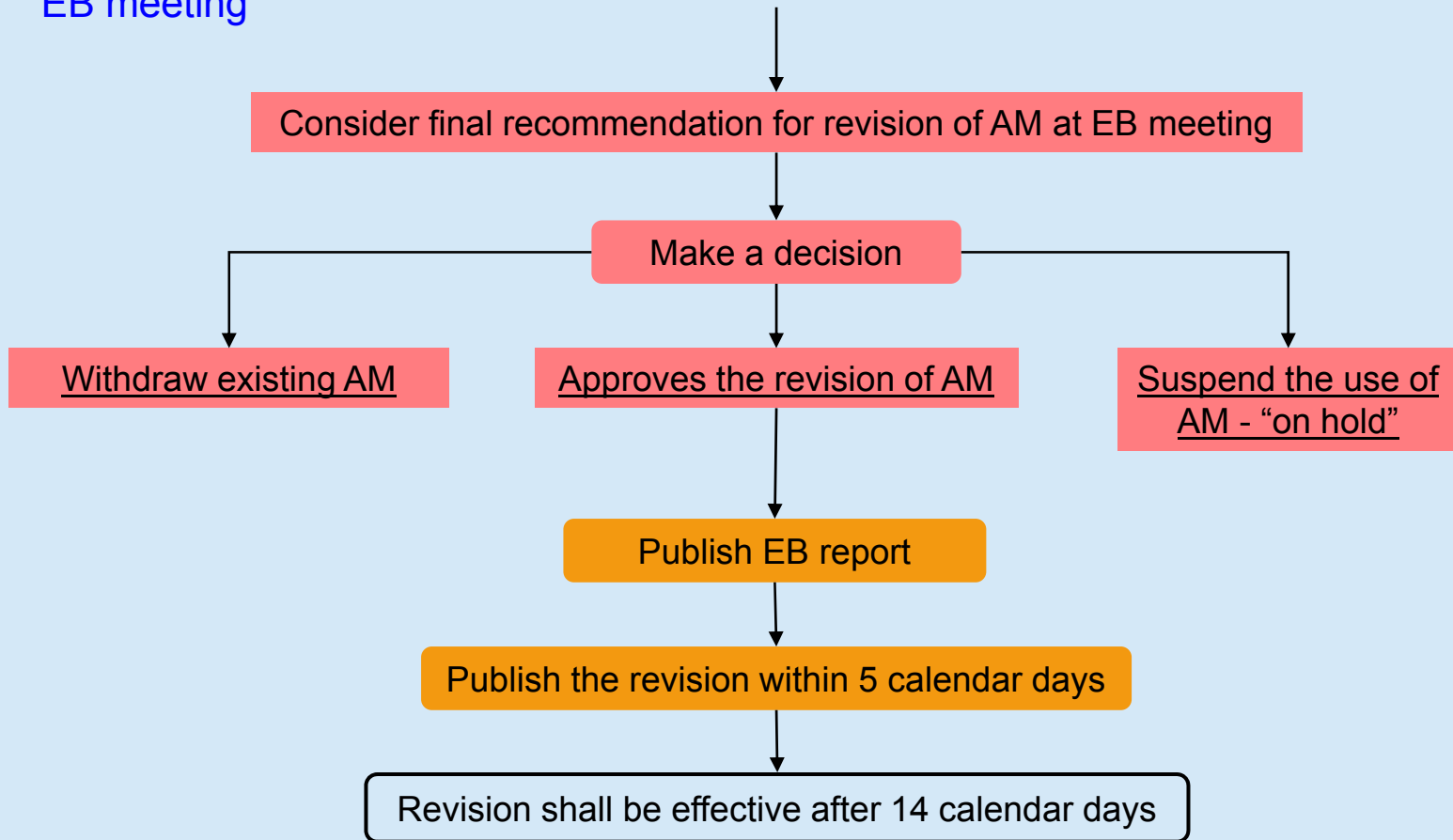
- Procedure for the revision of an approved baseline or monitoring methodology by the EB

MP meeting



- Procedure for the revision of an approved baseline or monitoring methodology by the EB

EB meeting



■ Guidance (1)

The revision of AM may be carried out in response to requests by a project participant, relevant stakeholders, the Executive Board, the Meth Panel or Working Groups.

■ Guidance (2)

A revision is the modification of an AM in order to improve it or broaden its scope and applicability. The revision results in the AM with a new version number.

■ Guidance (3)

A revision of an AM may be carried out if one or more of the following conditions are considered to apply:

1. New or a better understanding of scientific evidence indicate that emission reductions may be over- or under estimated based on the existing approved methodology or that the reductions may not be real, measurable and verifiable
2. The applicability conditions require broadening to include more potential project types or conditions for use

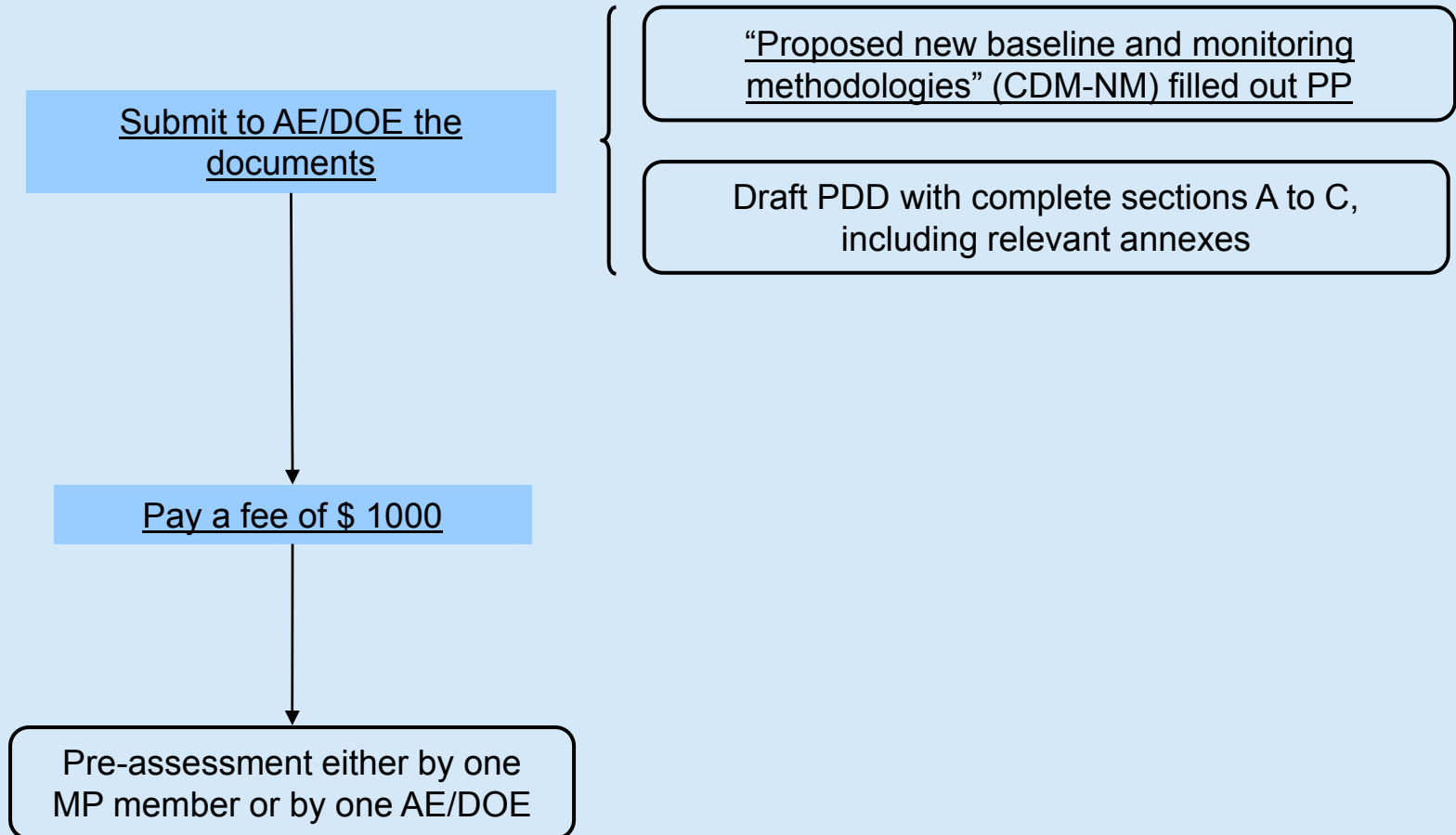
■ Guidance (3)

3. There are identified inconsistencies, errors and/or ambiguities in the language and/or formulae used within or between methodologies
4. There is scope for simplification and or more clarification in order to improve its user friendliness (also to include clarifications that have been given by the Meth Panel in response to queries regarding the applicability of approved methodologies)

■ Contents

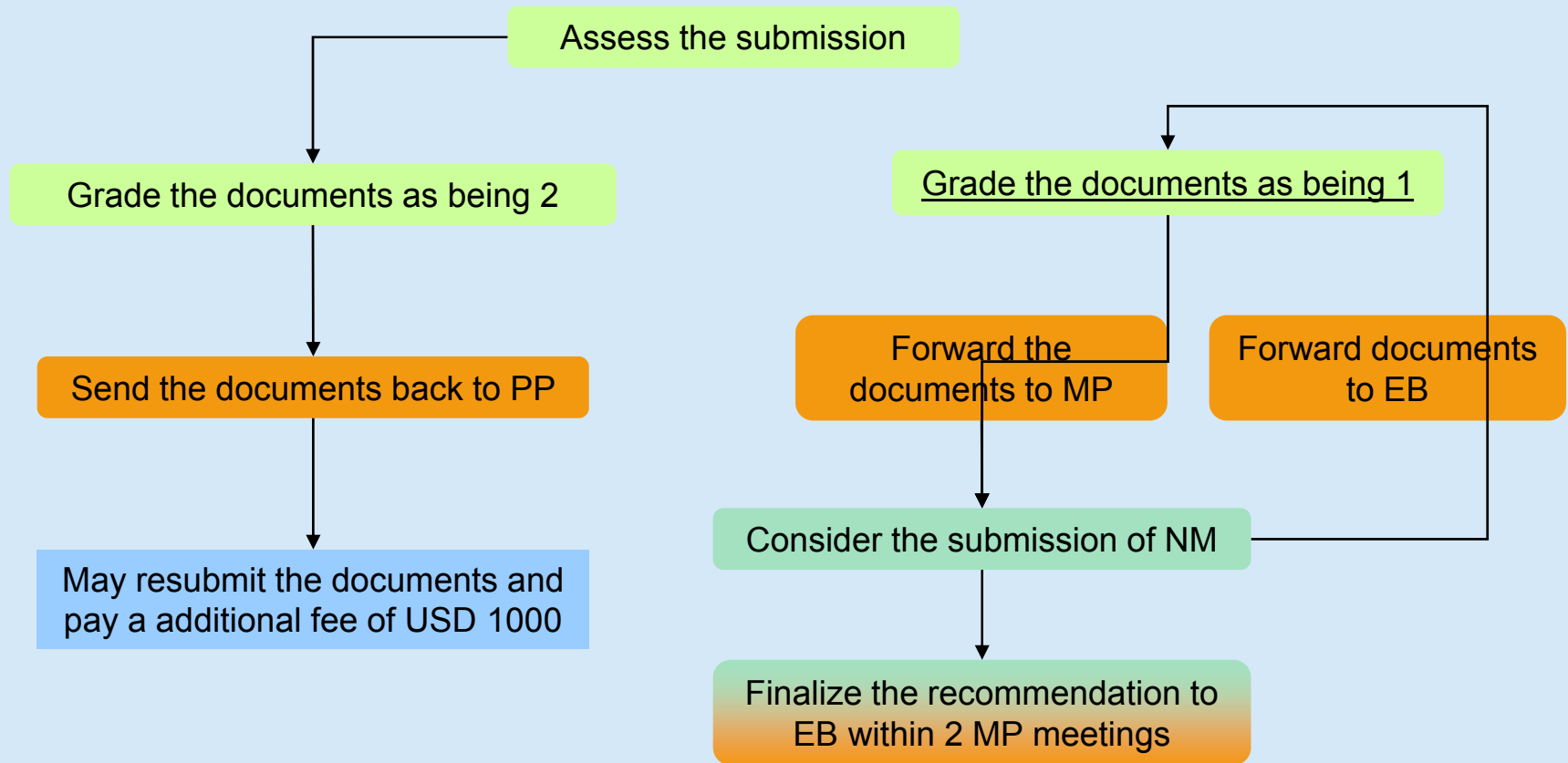
1. Introduction of methodologies
2. Structure of methodologies
3. Development of methodologies including guidelines
 - Procedure for the submission and consideration of queries regarding the application of approved methodologies by Designated Operational Entities to the Meth Panel (Version 4)
 - Procedure for the revision of an approved baseline or monitoring methodology by the Executive Board (Version 08.1)
 - Procedure for the submission and consideration of a proposed new methodology (Version 12)

- Procedure for the submission and consideration of a proposed new methodology



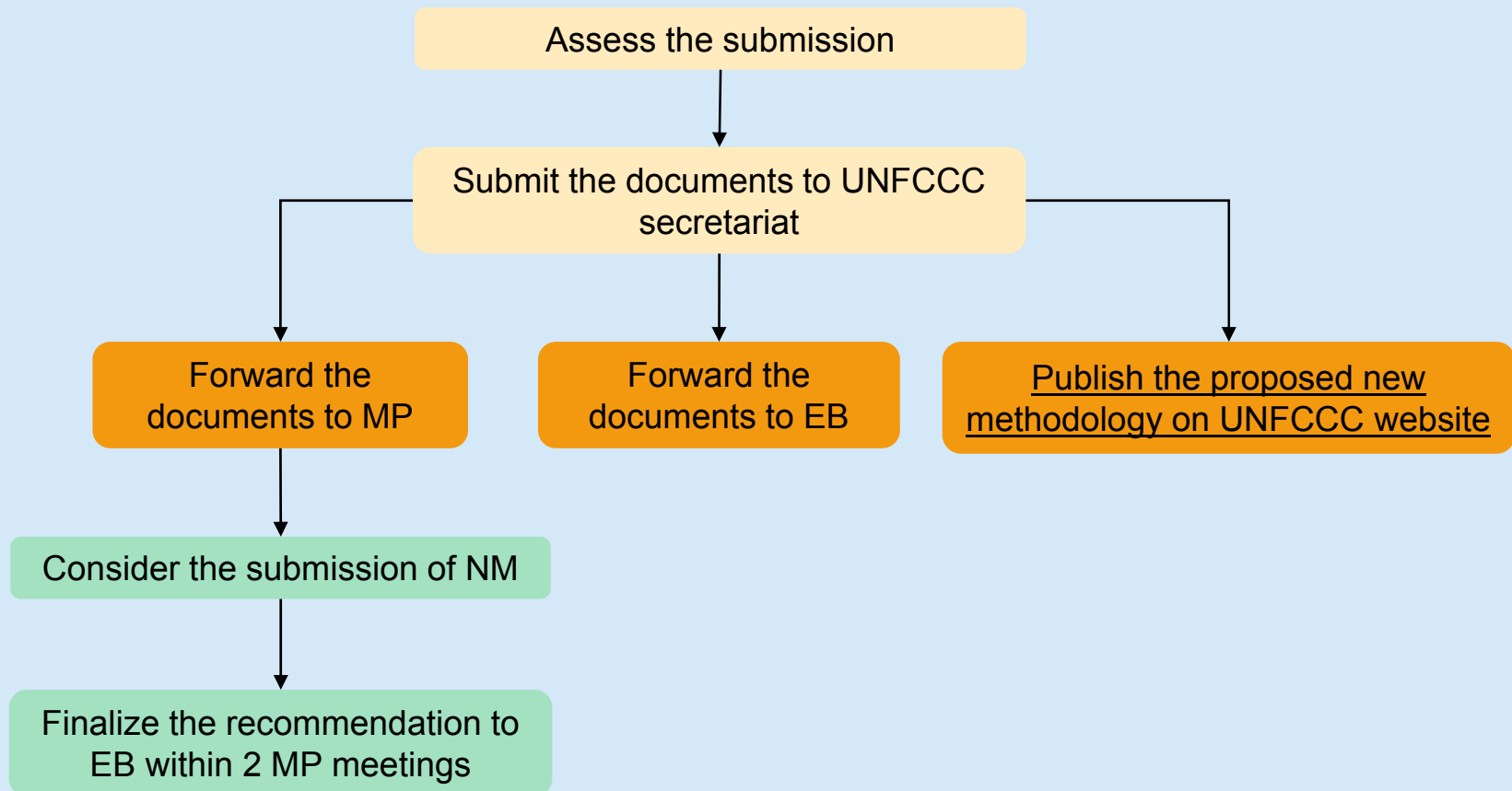
- Procedure for the submission and consideration of a proposed new methodology

1. Pre-assessment by one MP member



- Procedure for the submission and consideration of a proposed new methodology

2. Voluntary pre-assessment by one AE/DOE



- Procedure for the submission and consideration of a proposed new methodology

Analysis by the MP

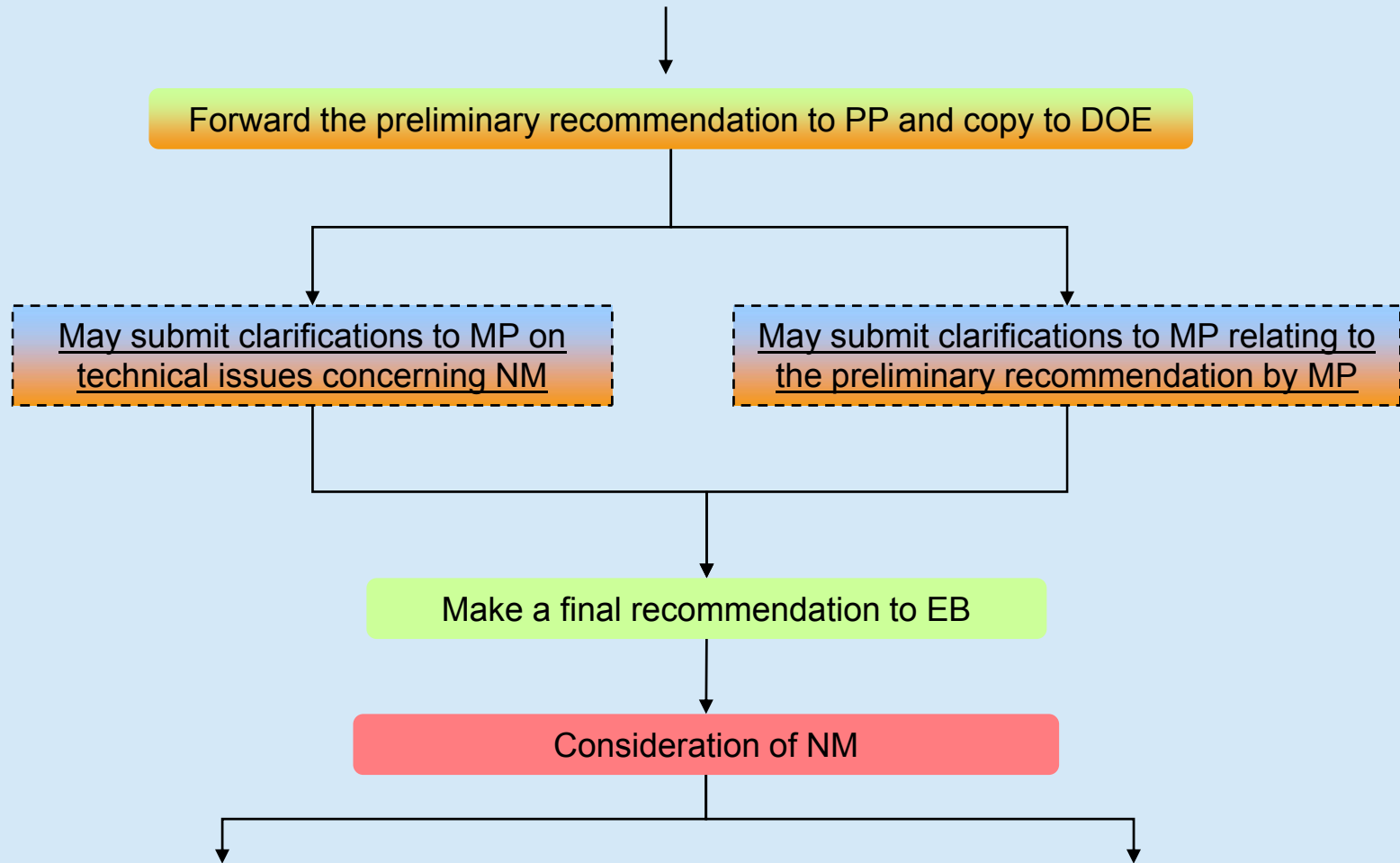
Desk review by 2 experts to appraise the validity of NM

Prepare the recommendation to MP
(F-CDM-NMex 3d "lead expert desk review report) and
(F-CDM-NMex 2d "second expert desk review form)

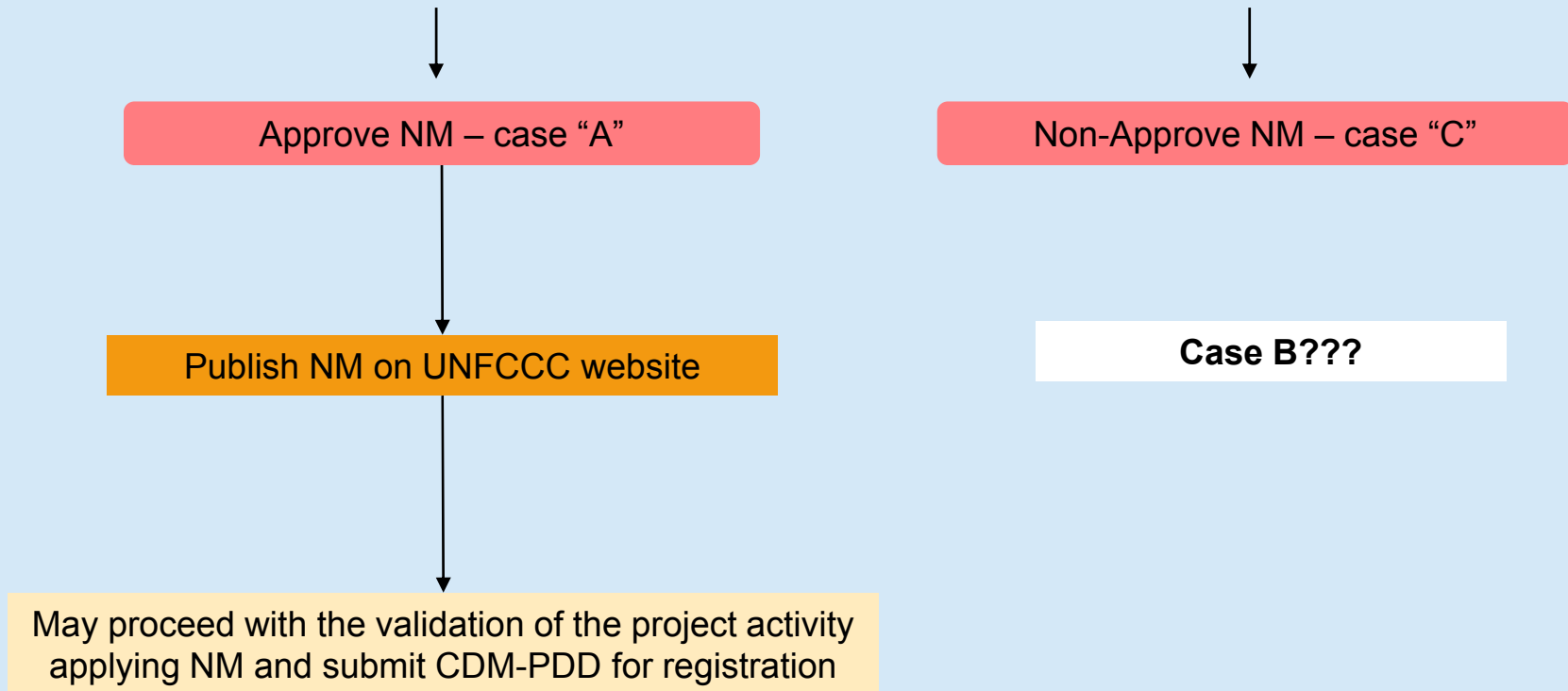
May request additional technical
information from PP

Preliminary recommendation to EB
(F-CDM-NMSUMmp)

- Procedure for the submission and consideration of a proposed new methodology



- Procedure for the submission and consideration of a proposed new methodology



■ Guidance

Link between baseline and monitoring methodologies

A strong link between baseline and monitoring methodologies are to be provided. New baseline and monitoring methodologies shall be proposed and approved together. If project participants would like to use different combinations of approved baseline and monitoring methodologies, they shall submit a proposal for consideration of the Meth Panel and approval by the Board.

Thank you for your attention!



EU China CDM Facilitation Project

